



Company : Apache

Well : Coelacanth-1

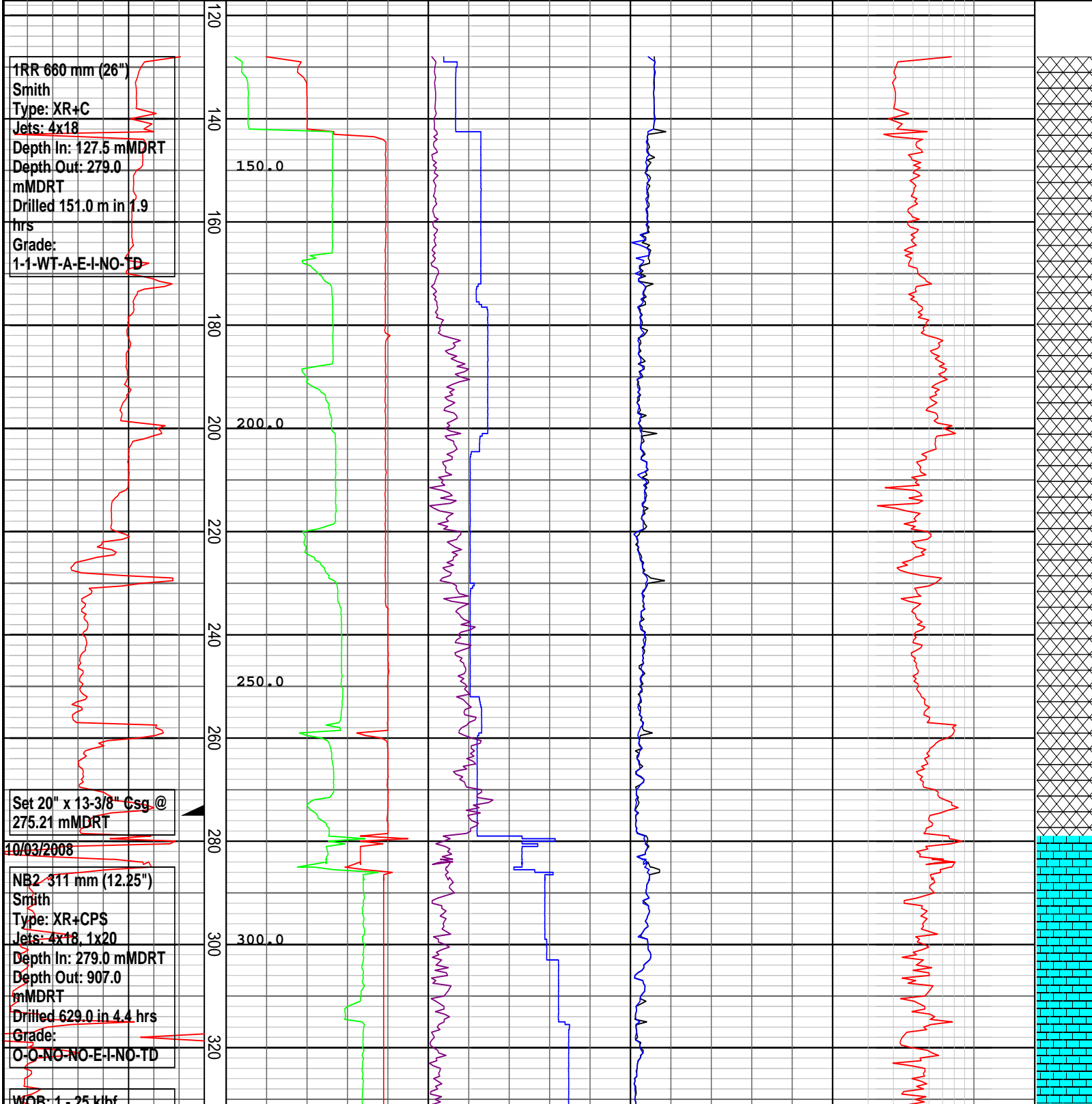
Interval : 117.00 - 1635.54 meters

Created : 17/Mar/2008 6:18:43 AM

INTEQ

DRILLING DATA PLOT

ROP (m/hr) 200 175 150 125 100 75 50 25	FLOW IN (gpm) 300 600 900 1200 1500	RPM Avg 60 120 180 240 300	TORQUE Max (kft-lb) 5 10 15 20 25	DXC 0.2	2	INTERPRETED LITHOLOGY
MD meters : 1:1000	STANDPIPE (psi) 1000 2000 3000 4000 5000	WOB Avg (klbs) 16 32 48 64 80	TORQUE Avg (kft-lb) 5 10 15 20 25			
	VDEPTH					

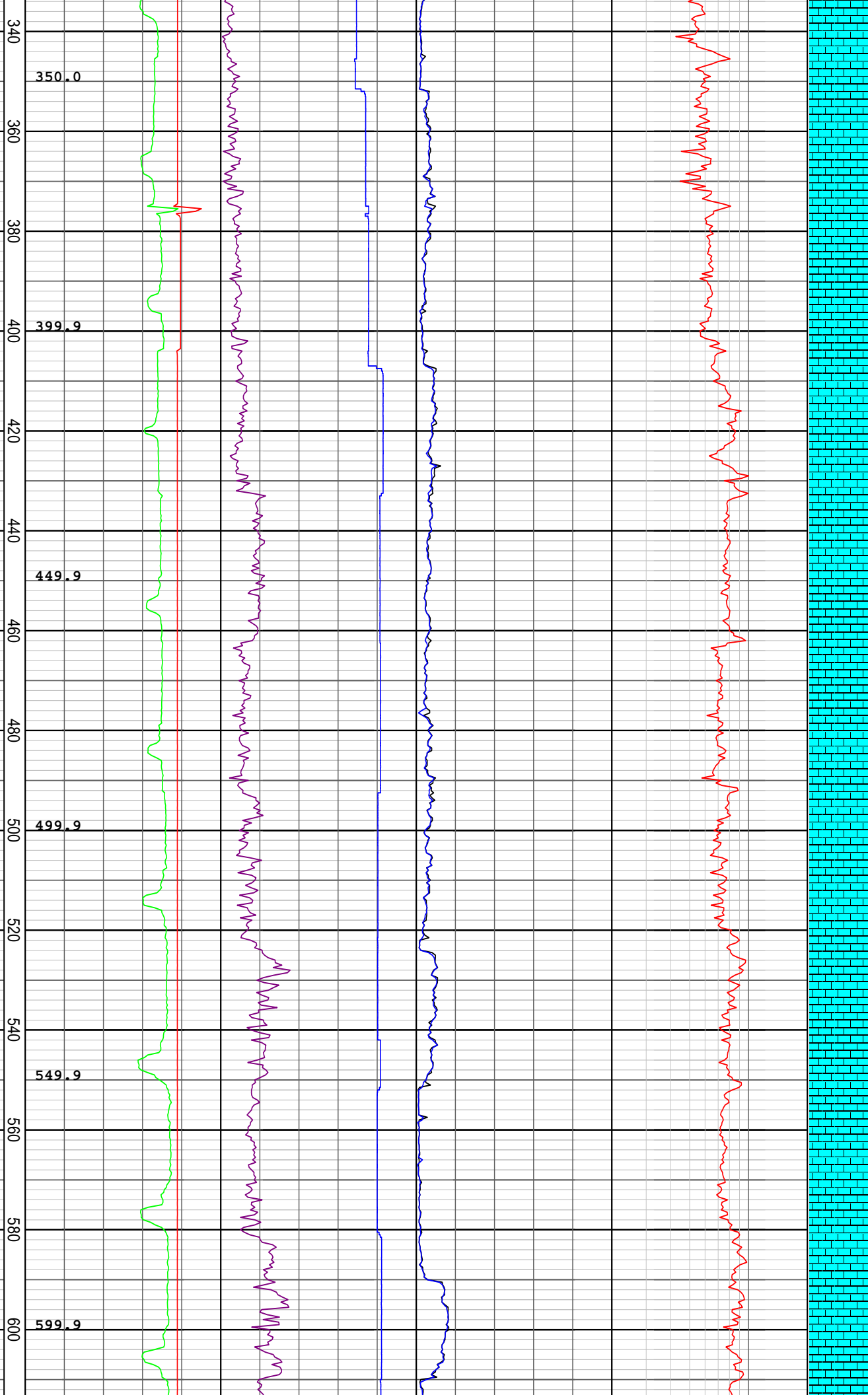


RPM: 26 - 88
GPM: 881 - 1349
SPP: 1758 - 3759 psi

WOB: 1 - 10 klb
RPM: 48 - 96
GPM: 1139 - 1191
SPP: 2929 - 3110 psi

WOB: 4 - 18 klb
RPM: 96 - 120
GPM: 1163 - 1191
SPP: 3041 - 3599 psi

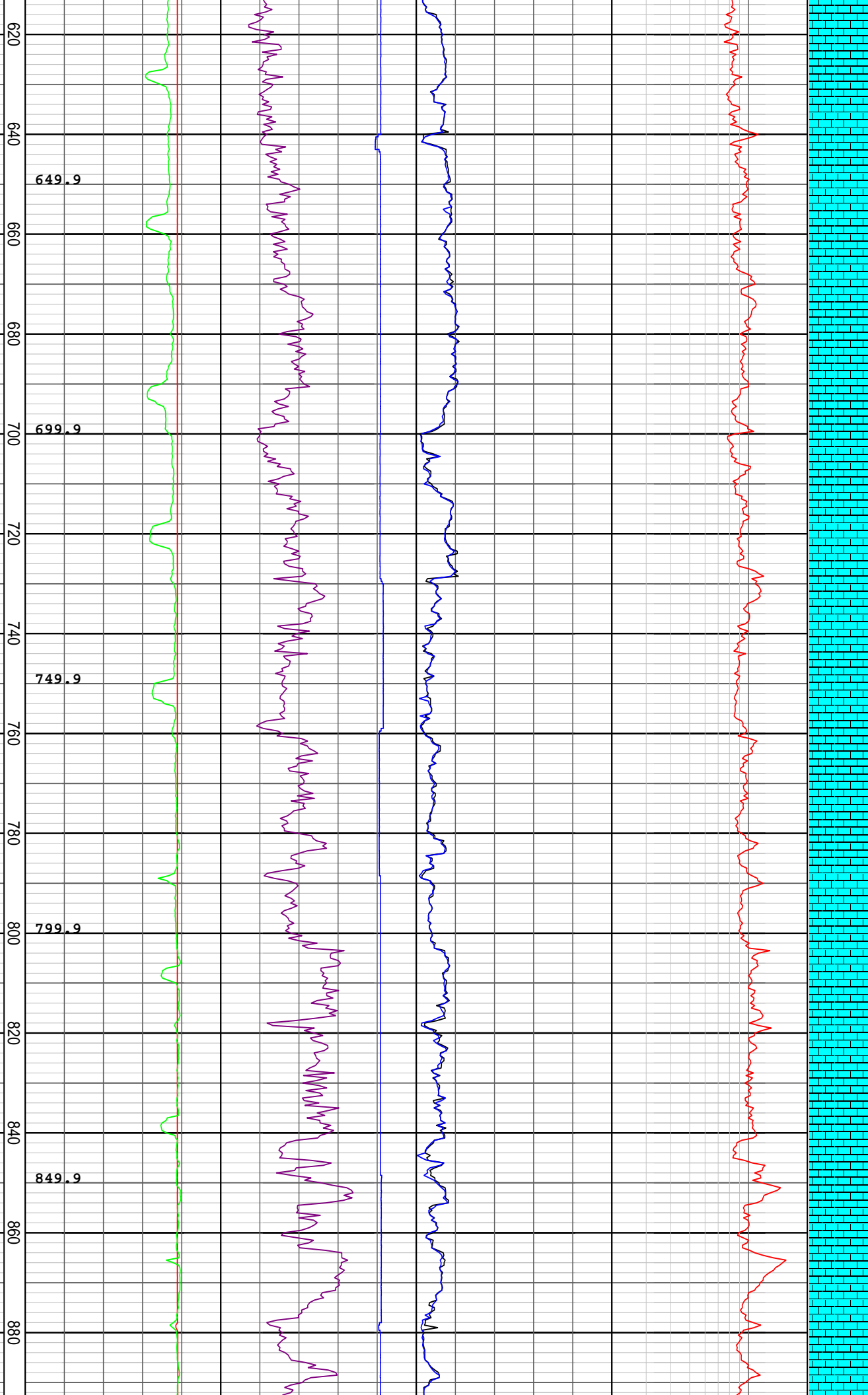
WOB: 7 - 28 klb
RPM: 112 - 121
GPM: 1166 - 1168



SPP: 2885 - 3737 psi

WOB: 11 - 37 klb
RPM: 108 - 118
GPM: 1166 - 1167
SPP: 2985 - 3793 psi

WOB: 14 - 43 klb
RPM: 114 - 123
GPM: 1166 - 1167
SPP: 3183 - 3946 psi



Set 9-5/8" Csg @ 902.1
mMDRT

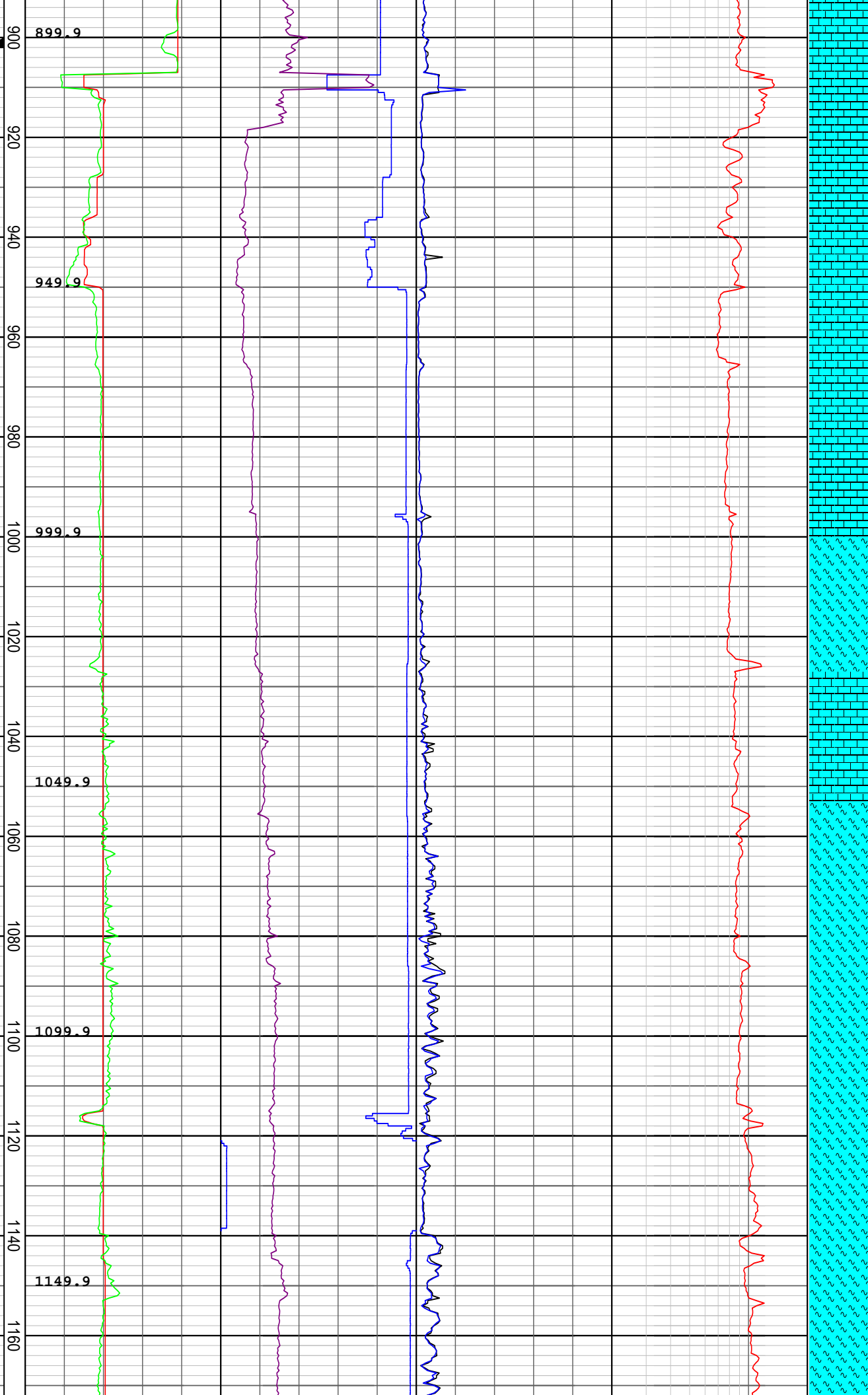
13/03/2008

NB3 216 mm (8.5")
Reed
Type: RSX661B
Jets: 4x14, 1x15
Depth In: 907.0 mMDRT
Depth Out: xxxx.0
mMDRT
Drilled xxx in xx hrs
Grade: X-X-X-x

WOB: 18 - 54 klb
RPM: 113 - 123
GPM: 1155 - 1171
SPP: 3463 - 3979 psi

WOB: 6 - 63 klb
RPM: 37 - 123
GPM: 446 - 1171
SPP: 909 - 3900 psi

WOB: 14 - 25 klb
RPM: 37 - 123
GPM: 590 - 596
SPP: 1642 - 2374 psi



899.9

949.9

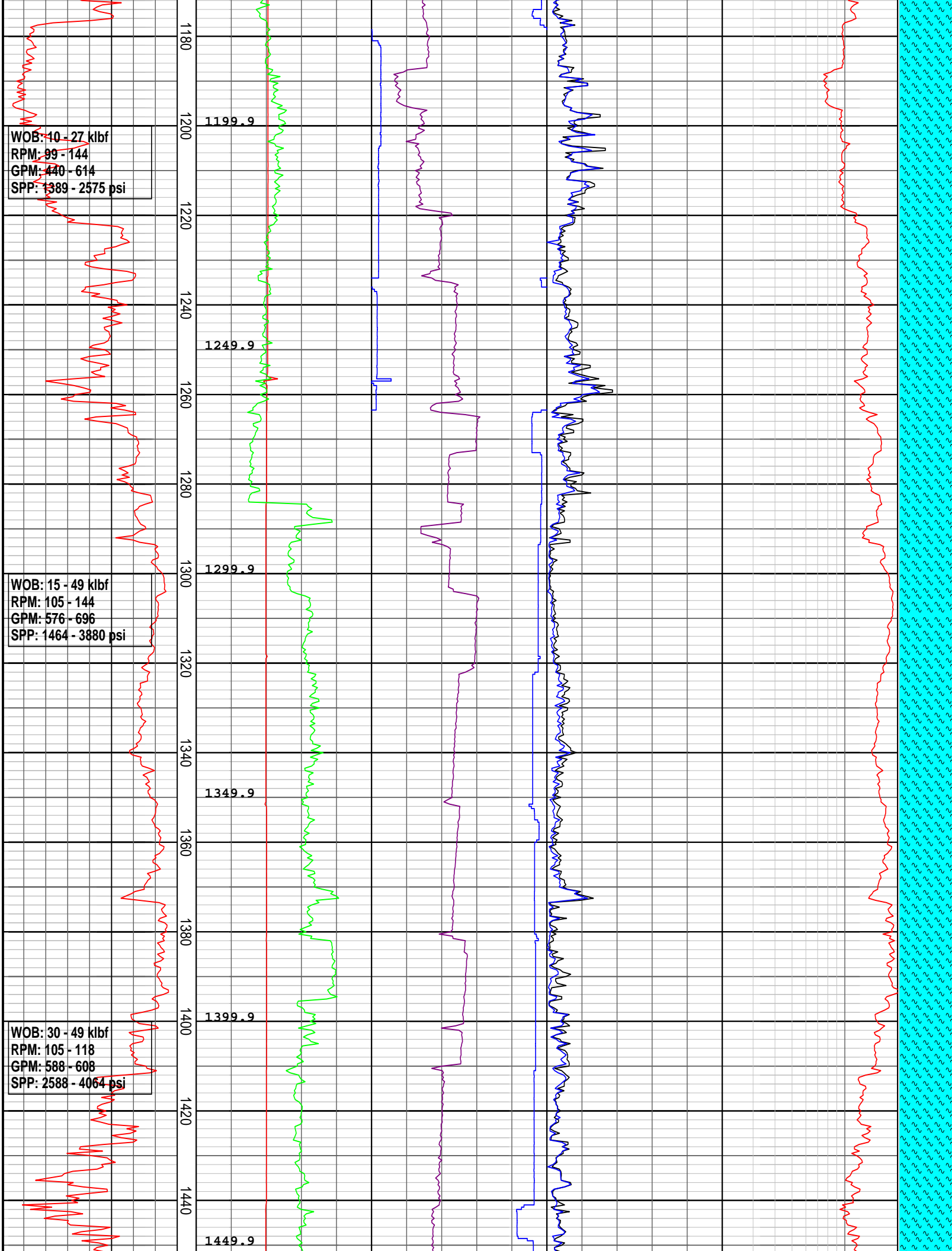
999.9

1049.9

1099.9

1149.9

900
920
940
960
980
1000
1020
1040
1060
1080
1100
1120
1140
1160



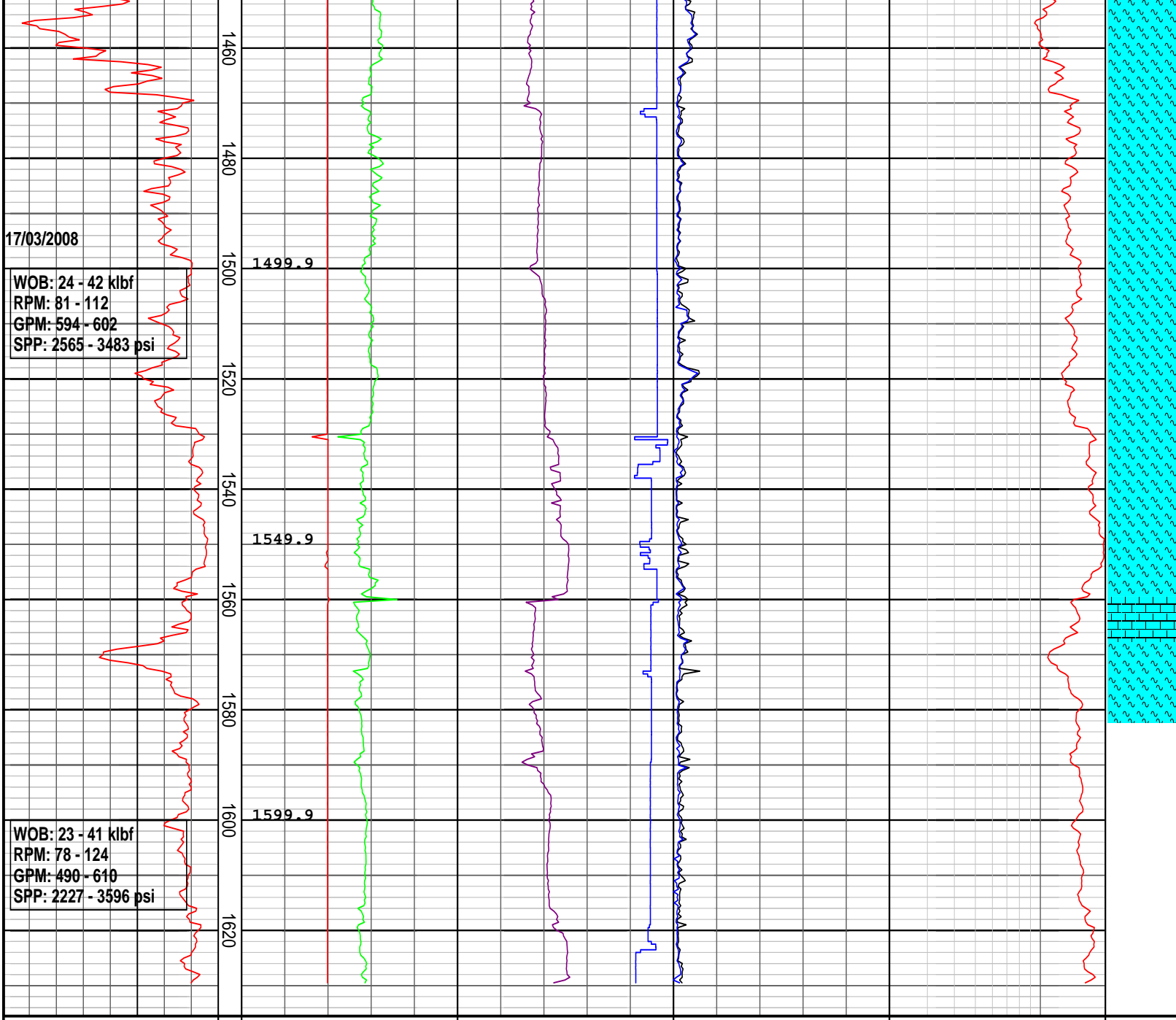
WOB: 10 - 27 klbf
RPM: 99 - 144
GPM: 440 - 614
SPP: 1389 - 2575 psi

WOB: 15 - 49 klbf
RPM: 105 - 144
GPM: 576 - 696
SPP: 1464 - 3880 psi

WOB: 30 - 49 klbf
RPM: 105 - 118
GPM: 588 - 608
SPP: 2588 - 4064 psi

1180
1200
1220
1240
1260
1280
1300
1320
1340
1360
1380
1400
1420
1440

1199.9
1249.9
1299.9
1349.9
1399.9
1449.9



DRILLING DATA PLOT

ROP (m/hr)	FLOW IN (gpm)	RPM Avg	TORQUE Max (kft-lb)	DXC	INTERPRETED LITHOLOGY
200 175 150 125 100 75 50 25	300 600 900 1200 1500	60 120 180 240 300	5 10 15 20 25	0.2 2	
MD meters 1:1000	STANDPIPE (psi)	WOB Avg (klbs)	TORQUE Avg (kft-lb)		
	1000 2000 3000 4000 5000	16 32 48 64 80	5 10 15 20 25		
	VDEPTH				